

# Case Study – BBJ Systems

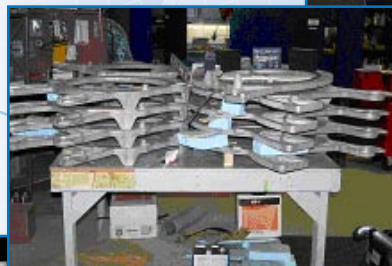
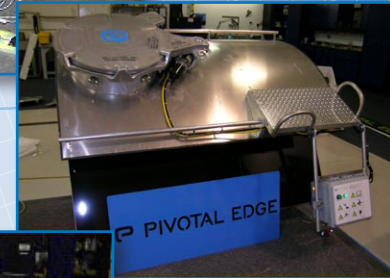
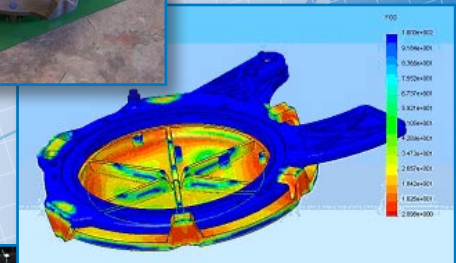
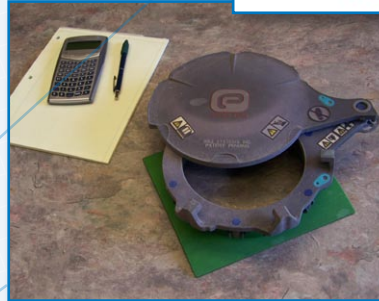
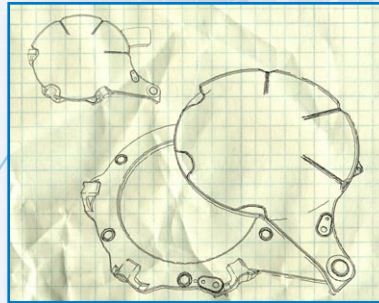
It started with a simple idea -- literally a rough sketch on a napkin. BBJ Systems, Inc., saw a need for a device to improve the safety and efficiency of trailers used in the concrete industry.

They envisioned creating a lid that could be opened with a remote control unit, rather than requiring employees to climb on the top of trailers and manually open the lids. Such a device would save time and eliminate accidents commonly associated with employees falling off of the trailers.

BBJ Systems looked to Widget Works and Applied Engineering, Inc. to bring the idea to market. From the initial concept to the final manufactured solution, Widget Works and Applied Engineering worked together to provide a complete solution.

## Product Development Process

1. Initial concept
2. Preliminary design
3. Develop prototypes
4. Analyze the design
5. Field test the product
6. Assist with marketing
7. Assist with manufacturing
8. Bring the product to market



Contact Widget Works or Applied Engineering today to learn more about product development.



**widget works**  
a division of applied engineering, inc.

[www.ae-solutions.com](http://www.ae-solutions.com) ■ [www.widgetworksae.com](http://www.widgetworksae.com)

UNCOVER YOUR FUTURE